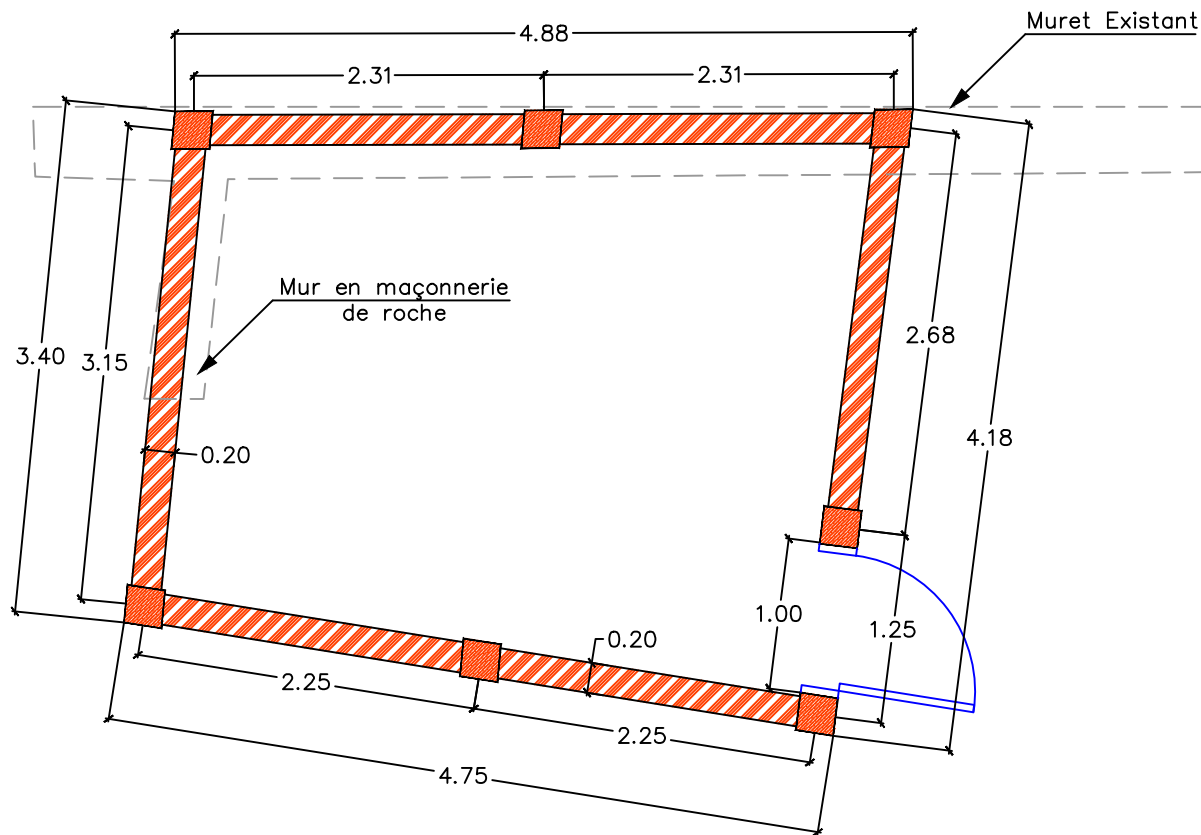
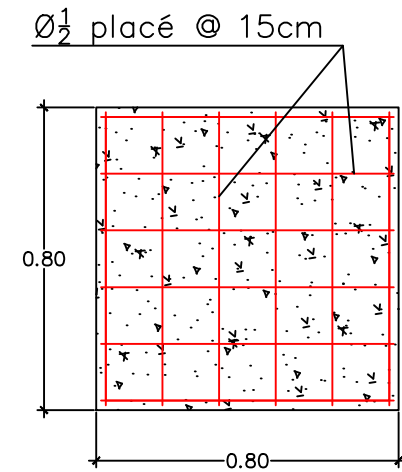


MUR DE PROTECTION DU CAPTAGE 1

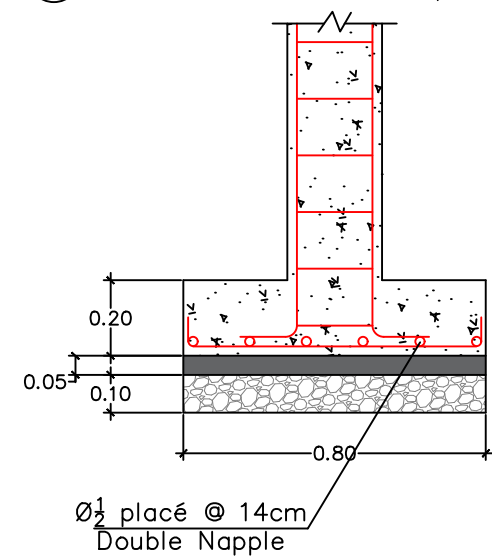


6 DETAIL CLOTURE (VUE EN PLAN) Scale: 1/50

7 DETAIL POTEAU (COUPE TRANSVERALE)
Scale: 1/20



8 DETAIL POTEAU (COUPE TRANSVERALE)
Scale: 1/20



GENERAL NOTES

PROJECT NAME: REGLEAU PHASE-2
REHABILITATION DU SAEP DE MOUILLAC

DRAWING TITLE:
MUR DE PROTECTION CAPTAGE 1

DRAWN BY: ING. MUNICIPAL	CHECKED BY: ING. MUNICIPAL	APPROVED BY: ING. MUNICIPAL	DATE: 30 AOUT 2023
------------------------------------	--------------------------------------	---------------------------------------	------------------------------

MAÎTRE D'OUVRAGE:
MAIRIE DE LA VALLEE DE JACMEL



BAILLEUR: HELVETAS INTERCOORPORETION

PROJECT NO: -	SCALE: 1:50	SHEET SIZE: A4
------------------	----------------	-------------------

DRAWING NO: - SHEET NO: 1/7

REVISION: 

