

# LISTE DES PLANCHES

## PLANS ARCHITECTURAUX

**PL-A-00** PLAN D'ENSEMBLE  
**PL-A-01** PLAN DE DISTRIBUTION  
**PL-A-02** PLAN DE COTATIONS  
**PL-A-03** FACADES  
**PL-A-04** COUPES  
**PL-A-05** PLAN DE TOITURE

## PLANS ELECTRICITE

**PL-E-01** PLAN D'ELECTRICITE

## PLANS DE PLOMBERIE

**PL-P-01** PLAN PLOMBERIE

## PLANS DE STRUCTURE

**PL-S-01** PLAN DES FONDATIONS  
**PL-S-02** PLAN DE POUTRAISON  
**PL-S-03** PLAN DETAILS PORTIQUES  
**PL-S-04** PLAN DETAIL CHAINAGE VERTICAUX  
**PL-S-05** PLAN DETAILS FERRAILLAGE  
**PL-S-06** STRUCTURAL CONCRETE NOTES



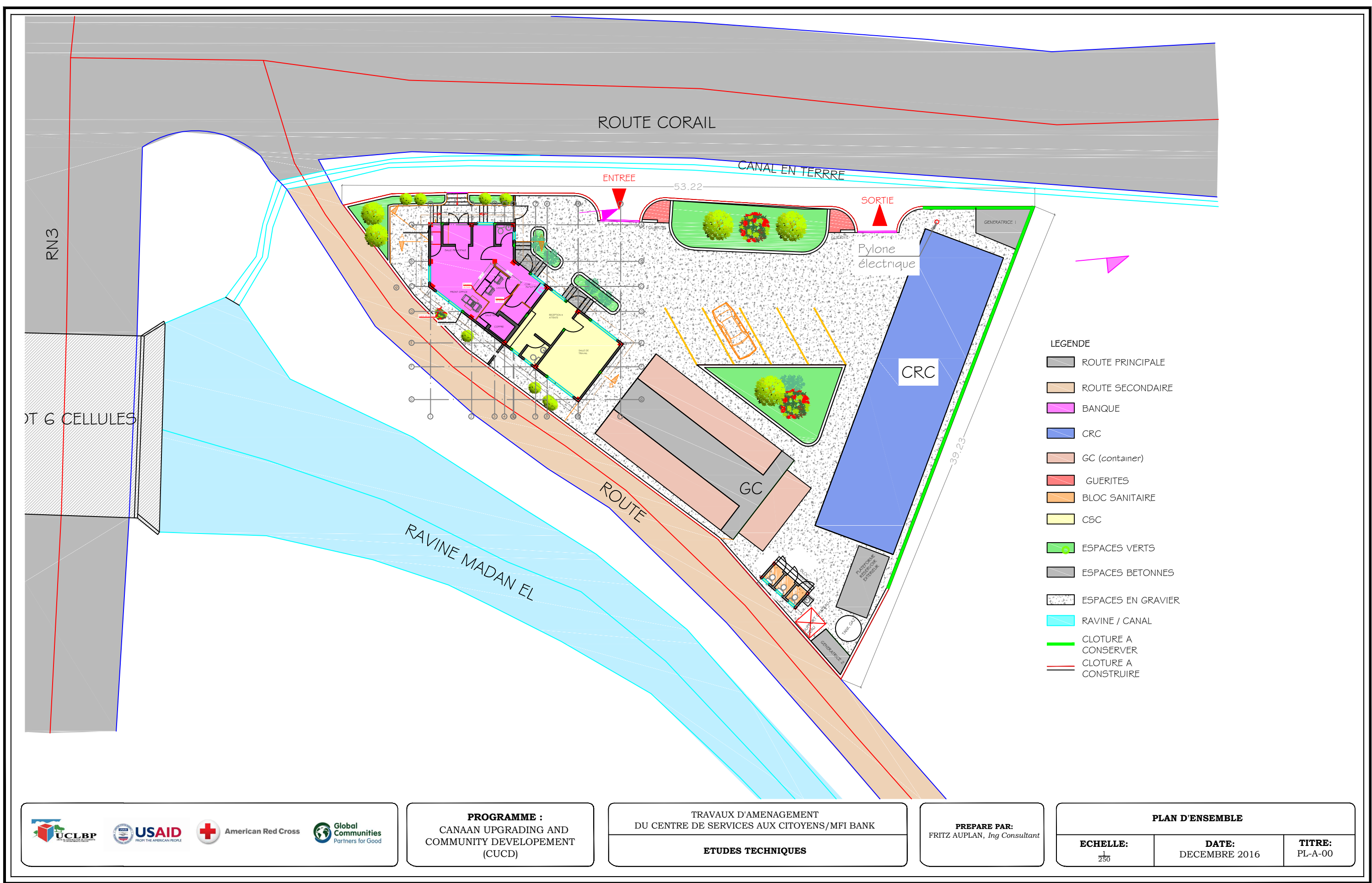
**PROGRAMME :**  
CANAAN UPGRADING AND  
COMMUNITY DEVELOPEMENT  
(CUCD)

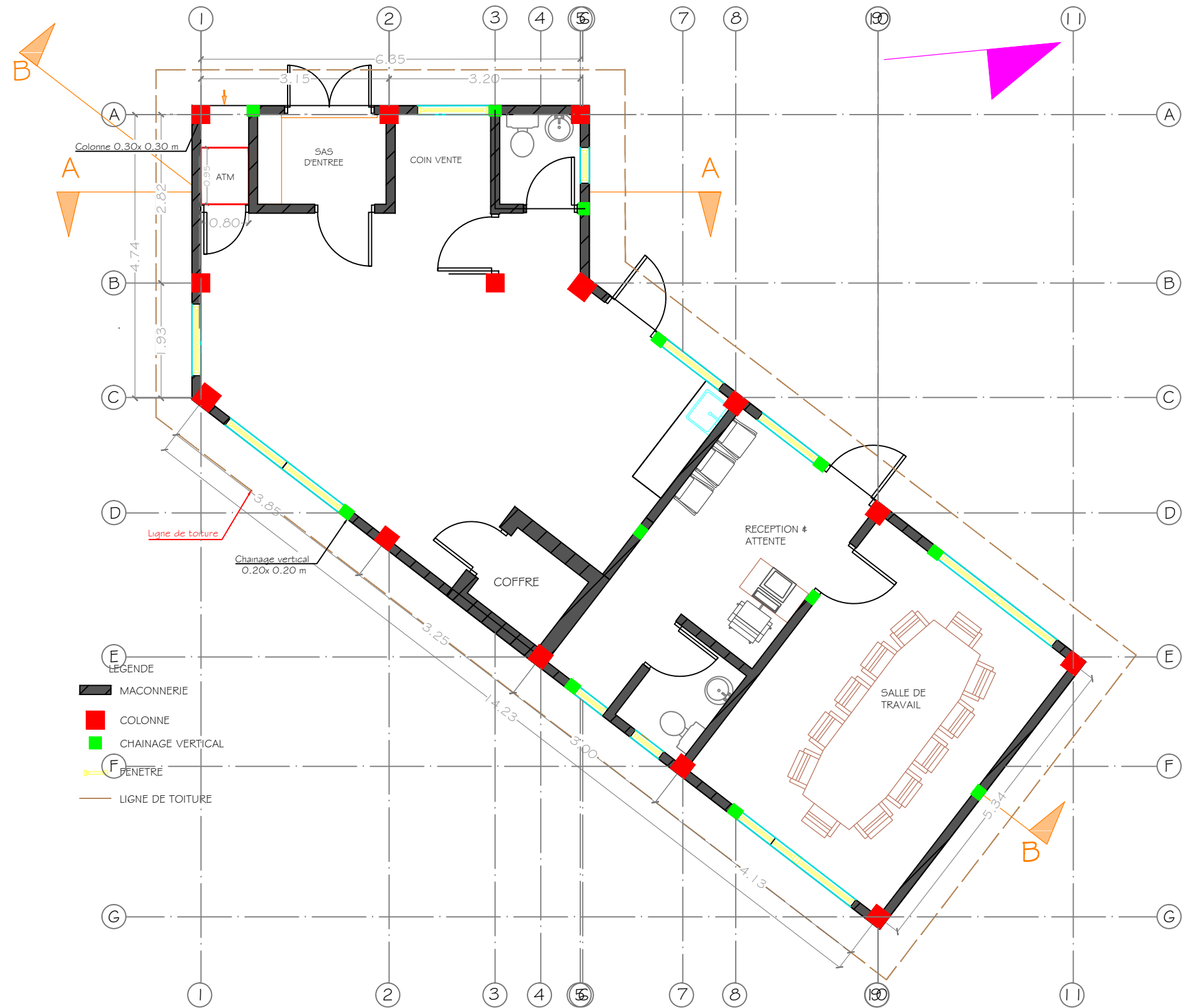
TRAVAUX D'AMENAGEMENT  
DU CENTRE DE SERVICES AUX CITOYENS/MFI BANK

**ETUDES TECHNIQUES**

**PREPARE PAR:**  
FRITZ AUPLAN, Ing Consultant

**LISTE DES PLANCHES**





- LEGENDE
- MAÇONNERIE
  - COLONNE
  - CHAINAGE VERTICAL
  - PENETRE
  - LIGNE DE TOITURE



**PROGRAMME :**  
CANAAN UPGRADING AND  
COMMUNITY DEVELOPEMENT  
(CUCD)

TRAVAUX D'AMENAGEMENT  
DU CENTRE DE SERVICES AUX CITOYENS/MFI BANK  
**ETUDES TECHNIQUES**

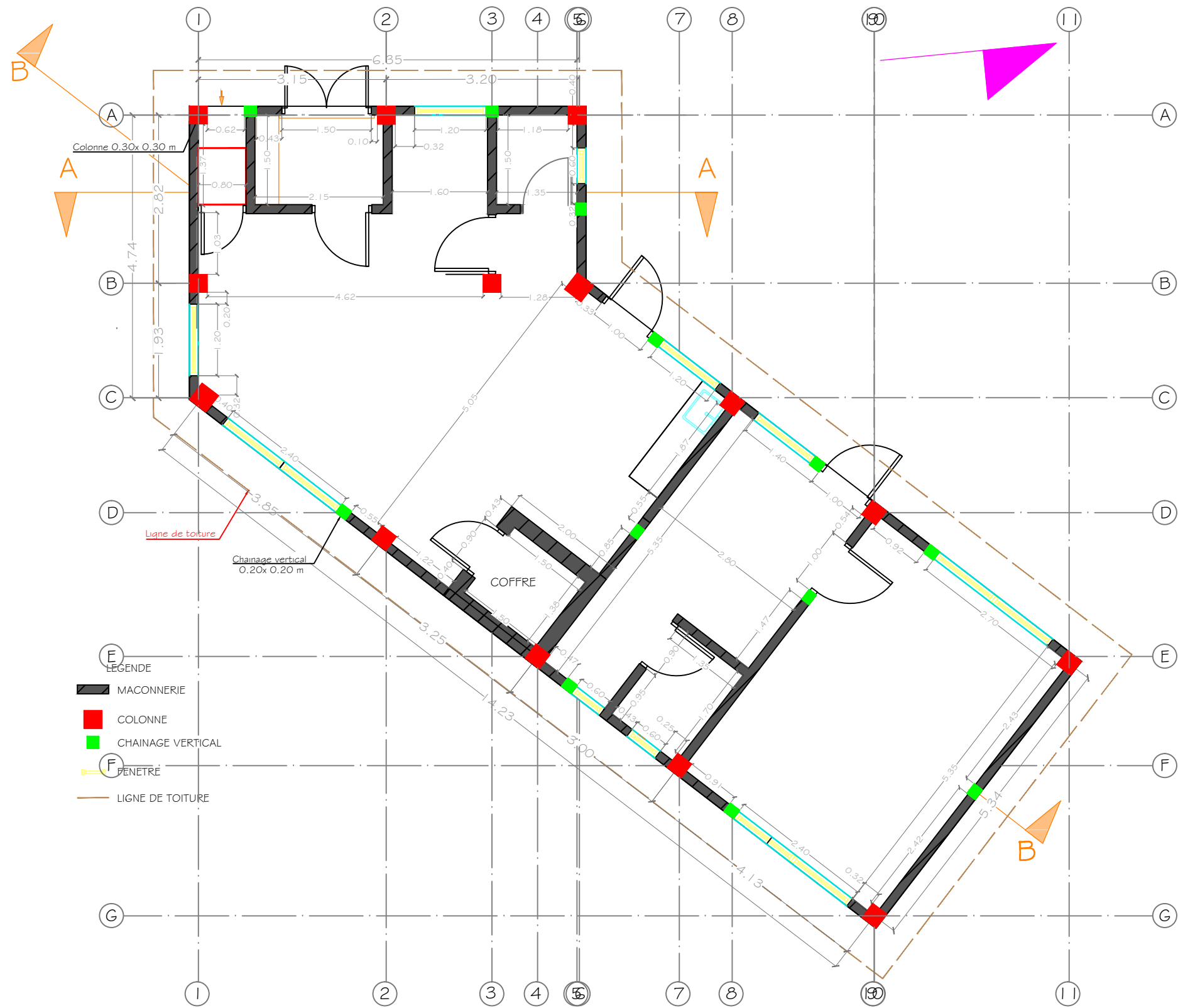
**PREPARE PAR:**  
FRITZ AUPLAN, Ing Consultant

**PLAN DE DISTRIBUTION**

**ECHELLE:**  
1/75

**DATE:**  
DECEMBRE 2016

**TITRE:**  
PL-A-01



**PROGRAMME :**  
CANAAAN UPGRADING AND  
COMMUNITY DEVELOPEMENT  
(CUCD)

TRAVAUX D'AMENAGEMENT  
DU CENTRE DE SERVICES AUX CITOYENS/MFI BANK

**ETUDES TECHNIQUES**

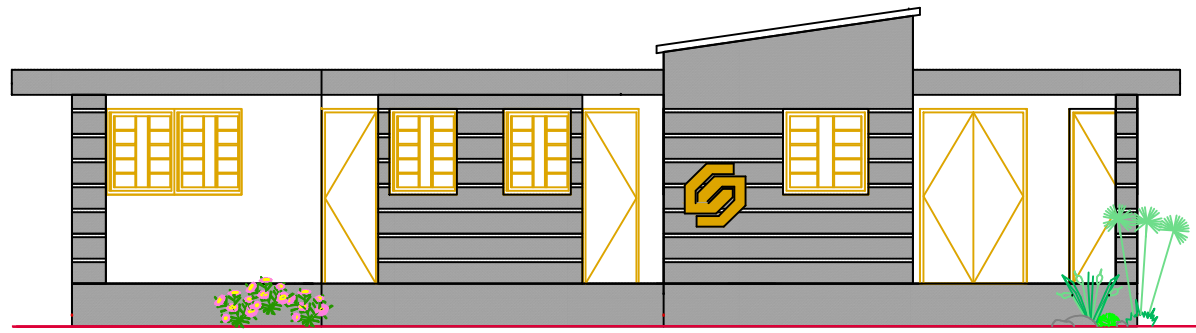
**PREPARE PAR:**  
FRITZ AUPLAN, Ing Consultant

**PLAN DE COTATION**

**ECHELLE:**  
1/75

**DATE:**  
DECEMBRE 2016

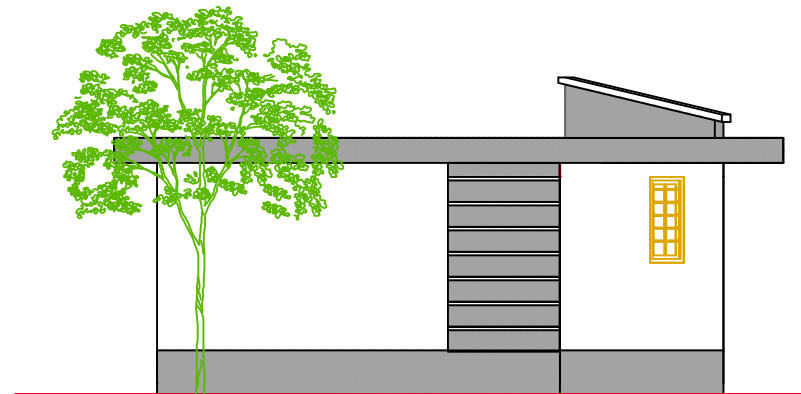
**TITRE:**  
PL-A-02



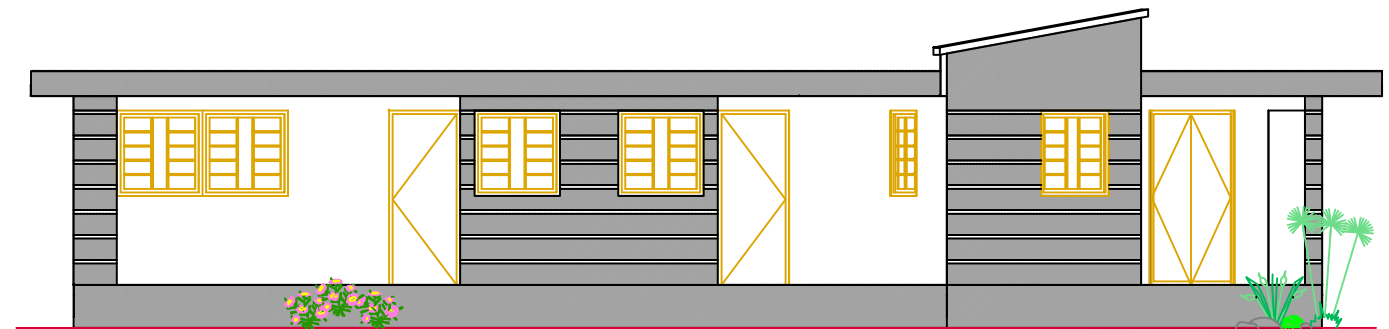
FACADE OUEST



FACADE SUD



FACADE EST



FACADE NORD



**PROGRAMME :**  
CANAAN UPGRADING AND  
COMMUNITY DEVELOPEMENT  
(CUCD)

TRAVAUX D'AMENAGEMENT  
DU CENTRE DE SERVICES AUX CITOYENS/MFI BANK

**ETUDES TECHNIQUES**

**PREPARE PAR:**  
FRITZ AUPLAN, Ing Consultant

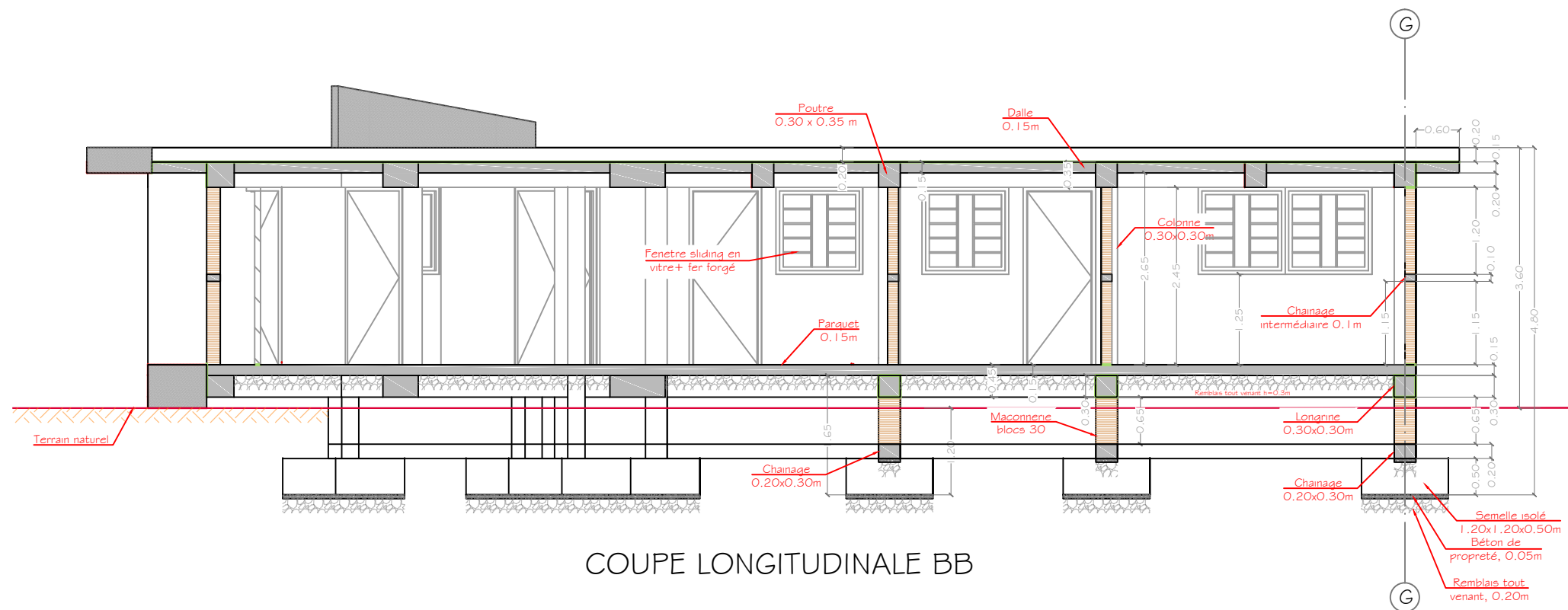
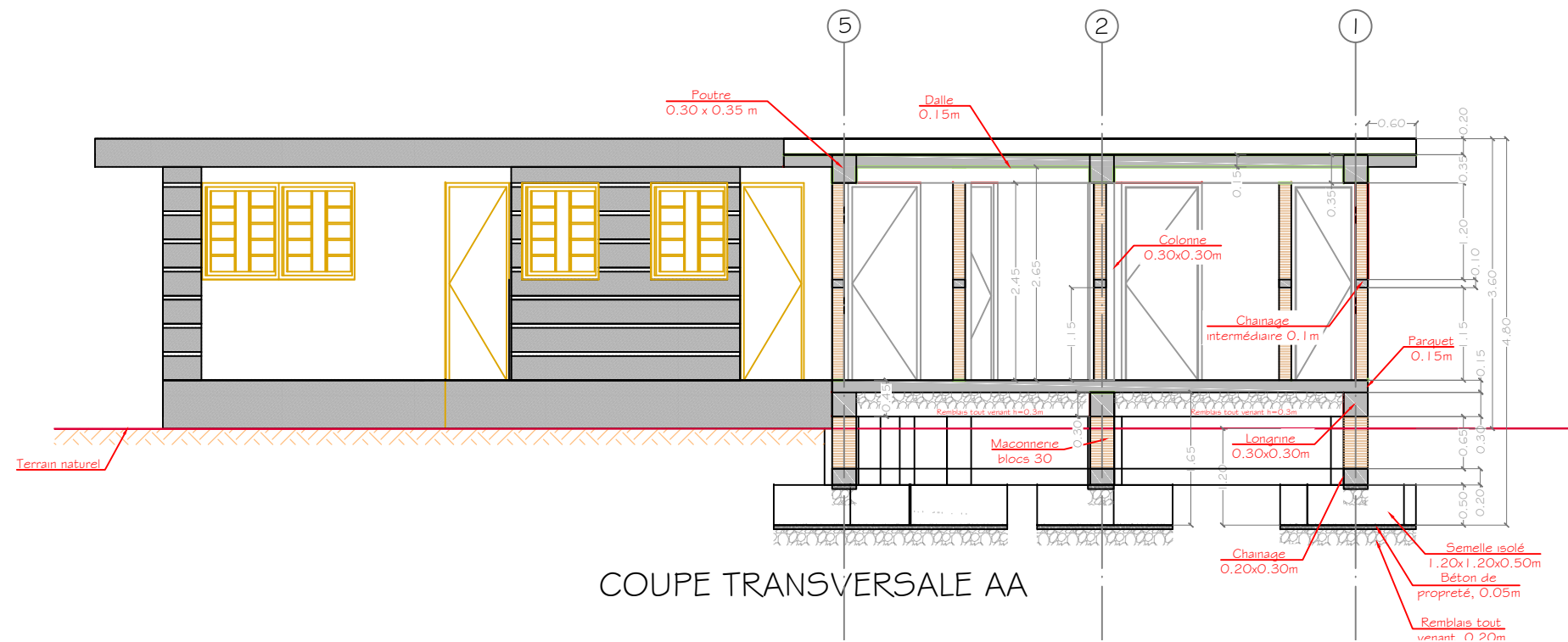
**FACADES**

**ECHELLE:**  
1/100

**DATE:**  
DECEMBRE 2016

**TITRE:**  
PL-A-03





**PROGRAMME :**  
CANAAN UPGRADING AND  
COMMUNITY DEVELOPEMENT  
(CUCD)

TRAVAUX D'AMENAGEMENT  
DU CENTRE DE SERVICES AUX CITOYENS/MFI BANK

## ETUDES TECHNIQUES

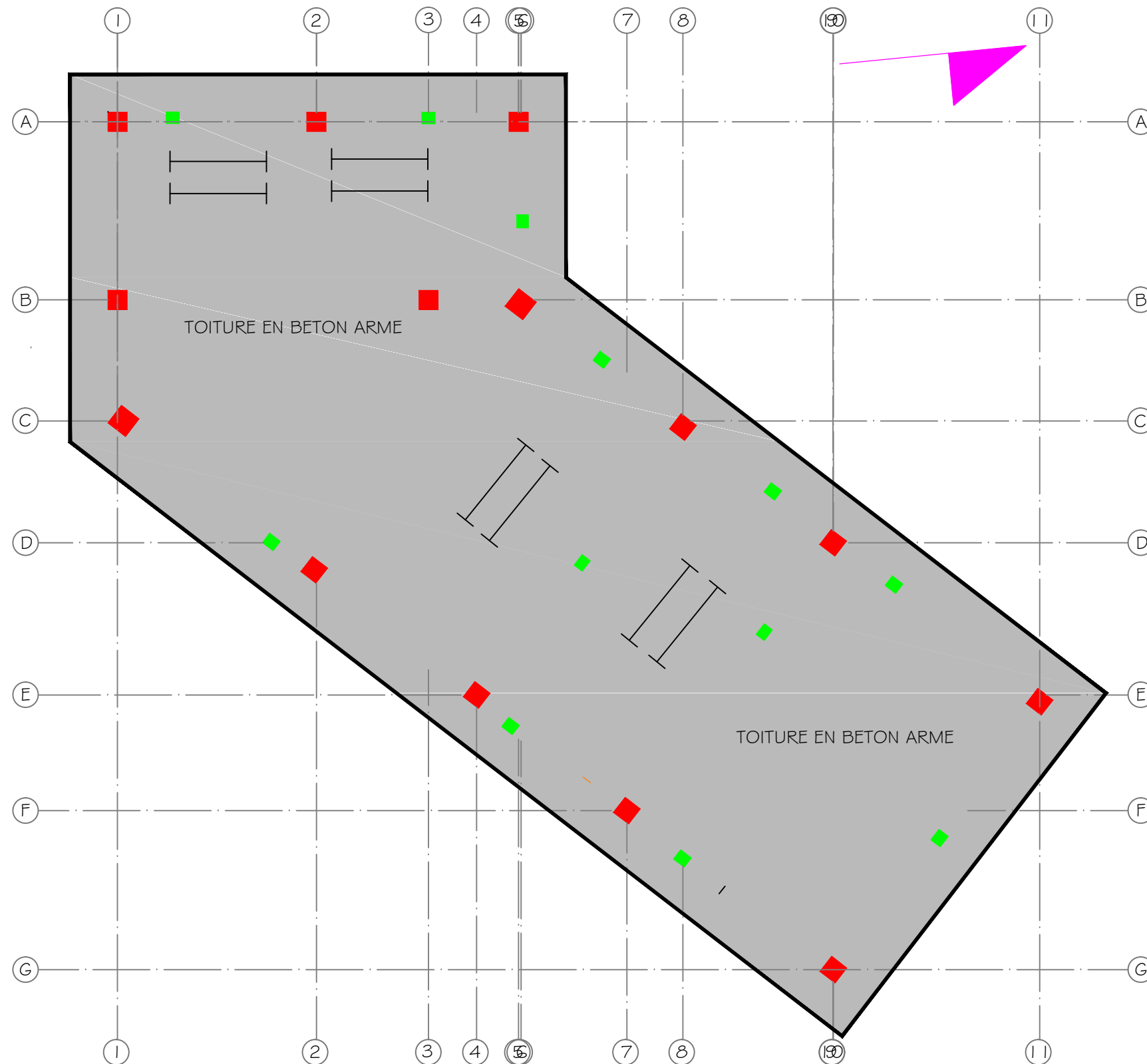
**PREPARE PAR:**  
FRITZ AUPLAN, *Ing Consultant*

## COUPES

**ECHELLE:**  
 $\frac{1}{100}$

**DATE:**  
DECEMBRE 2016

**TITRE:**  
PL-A-04



PLAN DE TOITURE



**PROGRAMME :**  
CANAAN UPGRADING AND  
COMMUNITY DEVELOPEMENT  
(CUCD)

TRAVAUX D'AMENAGEMENT  
DU CENTRE DE SERVICES AUX CITOYENS/MFI BANK

**ETUDES TECHNIQUES**

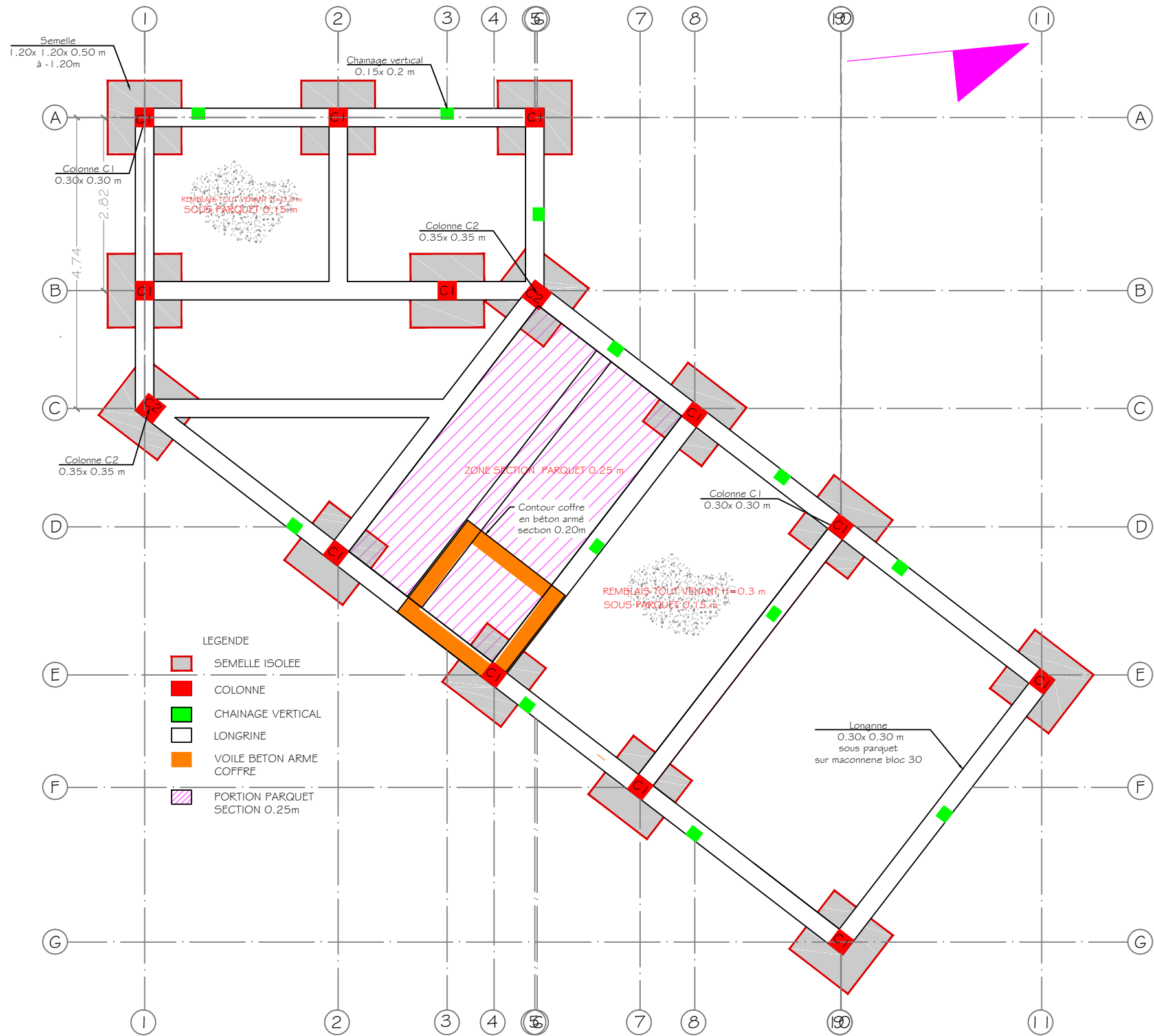
**PREPARE PAR:**  
FRITZ AUPLAN, Ing Consultant

**PLAN DE TOITURE**

**ECHELLE:**  
1/75

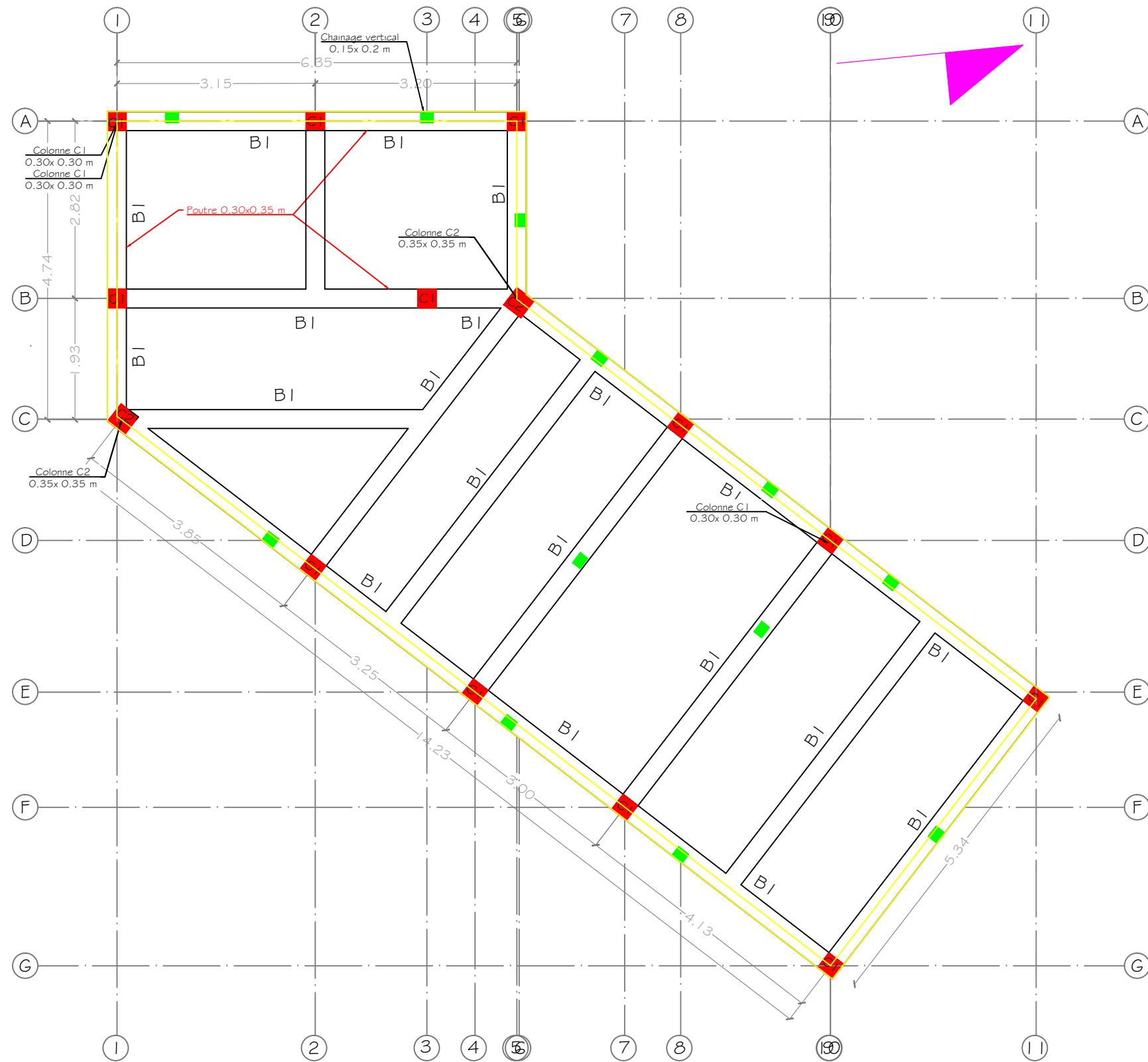
**DATE:**  
DECEMBRE 2016

**TITRE:**  
PL-A-05



PLAN DES FONDATIONS





**PROGRAMME :**  
CANAAN UPGRADING AND  
COMMUNITY DEVELOPEMENT  
(CUCD)

TRAVAUX D'AMENAGEMENT  
DU CENTRE DE SERVICES AUX CITOYENS/MFI BANK

**ETUDES TECHNIQUES**

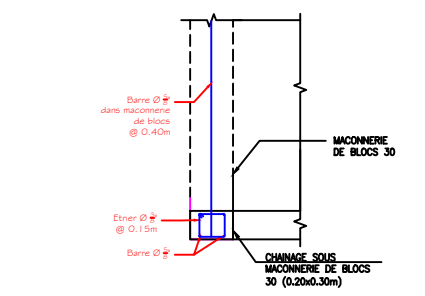
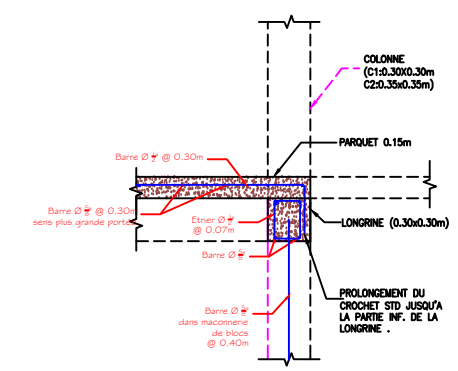
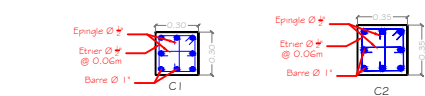
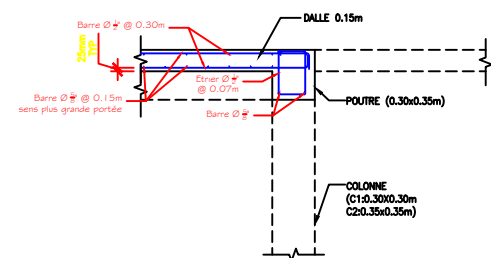
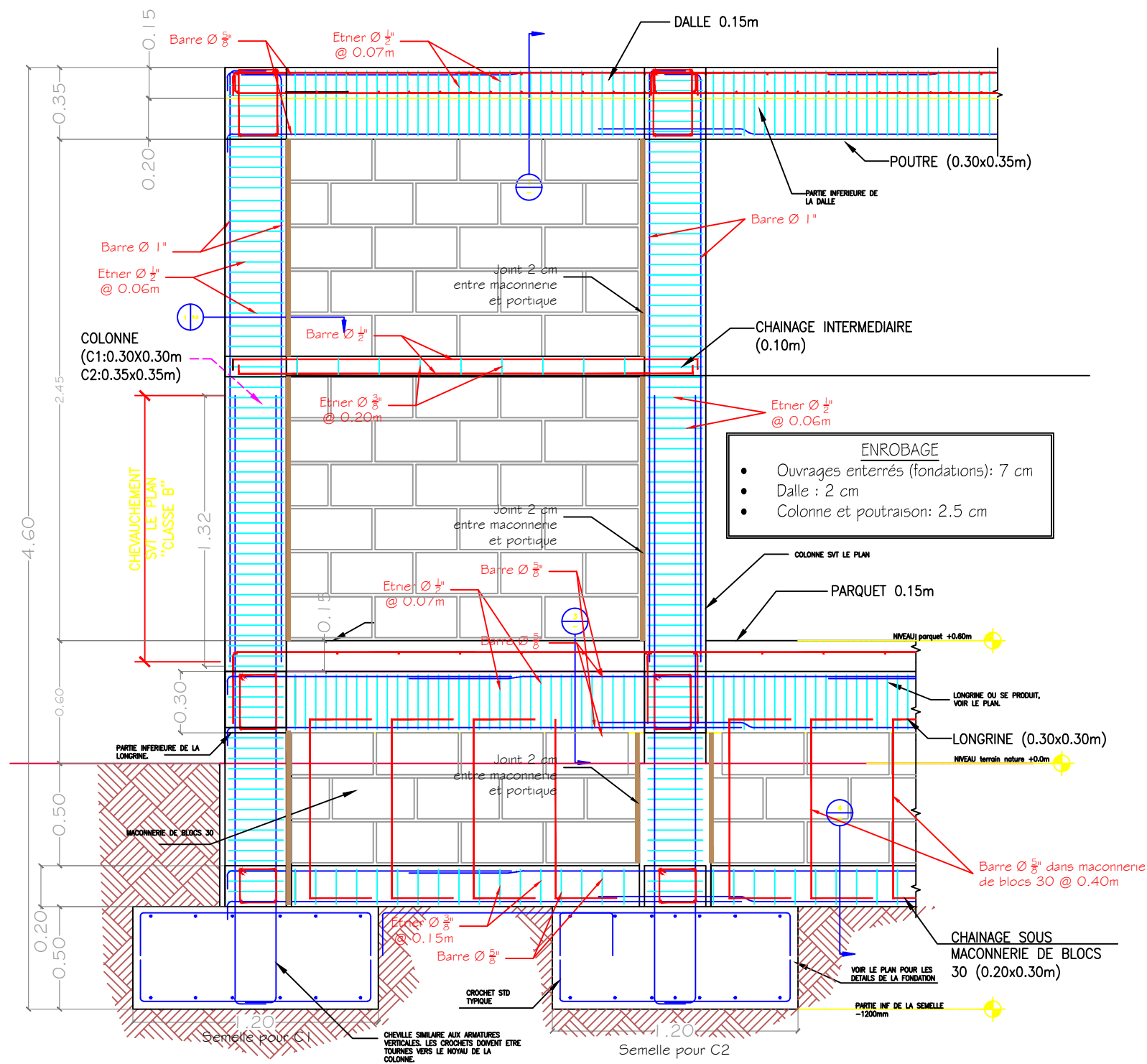
**PREPARE PAR:**  
FRITZ AUPLAN, Ing Consultant

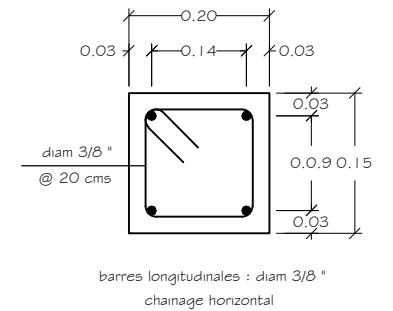
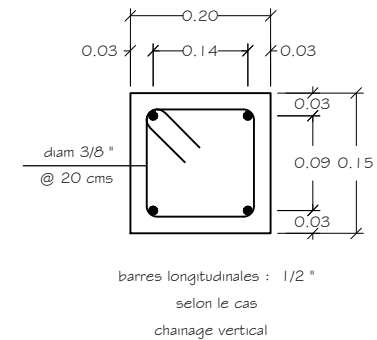
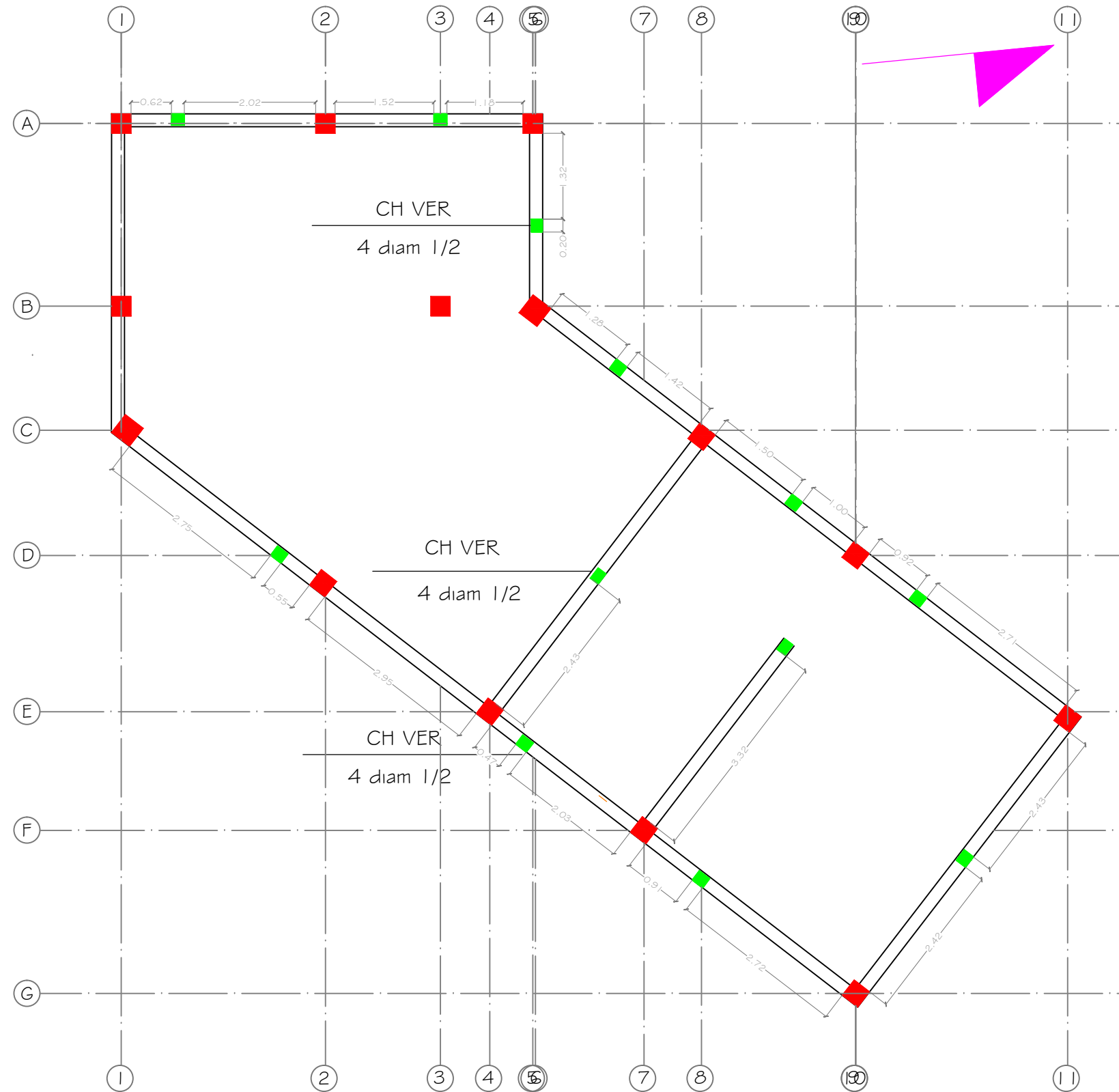
**PLAN DE POUTRAISON**

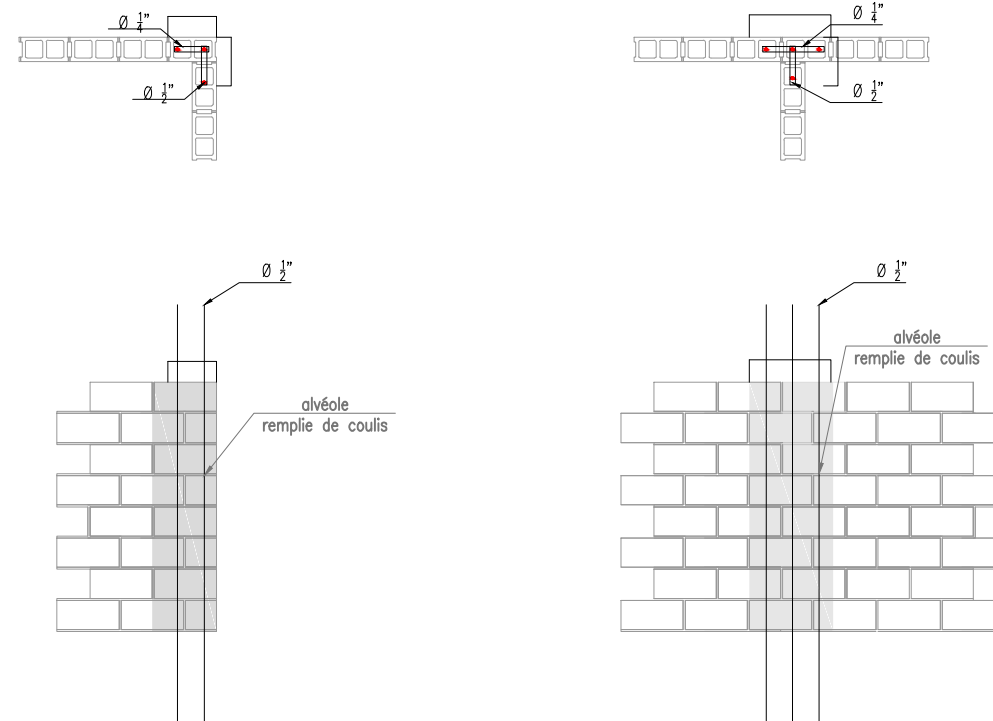
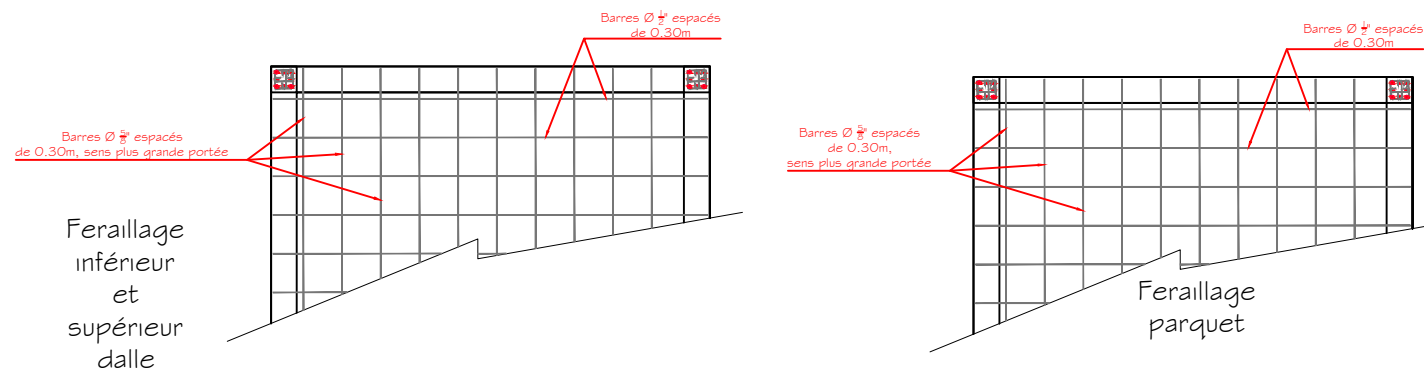
**ECHELLE:**  
1/200

**DATE:**  
DECEMBRE 2016

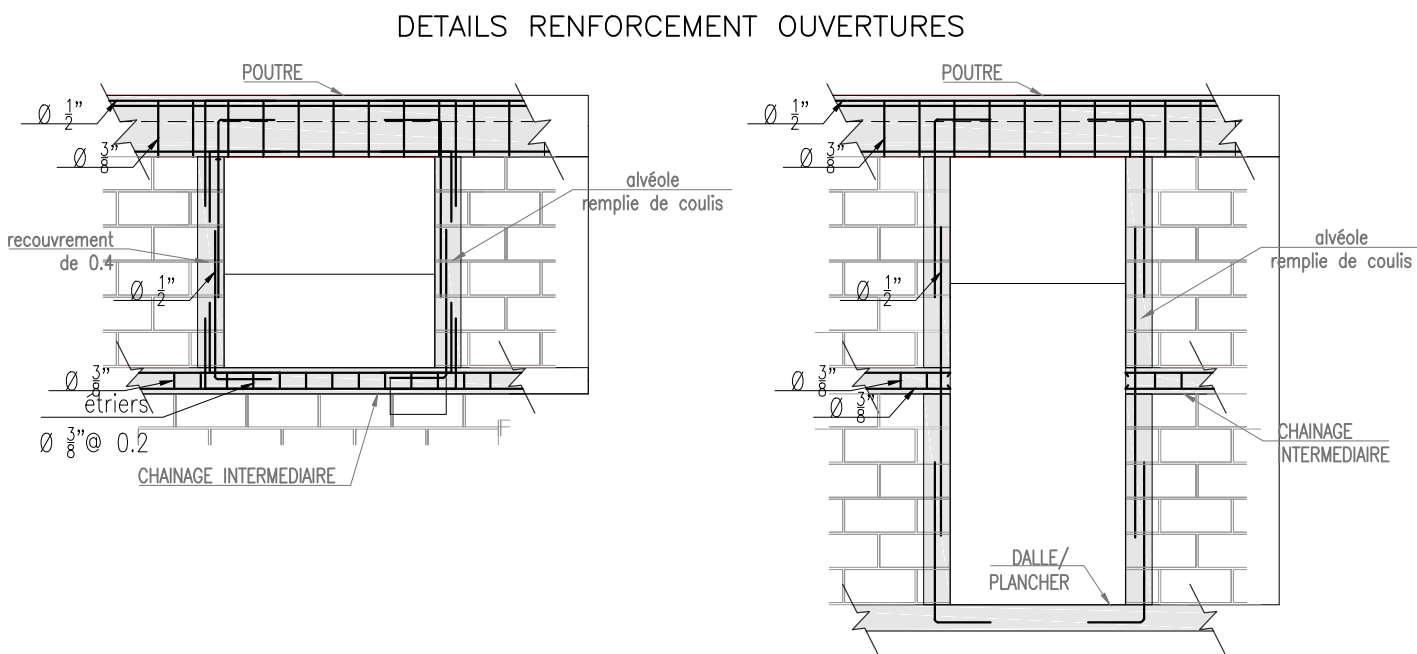
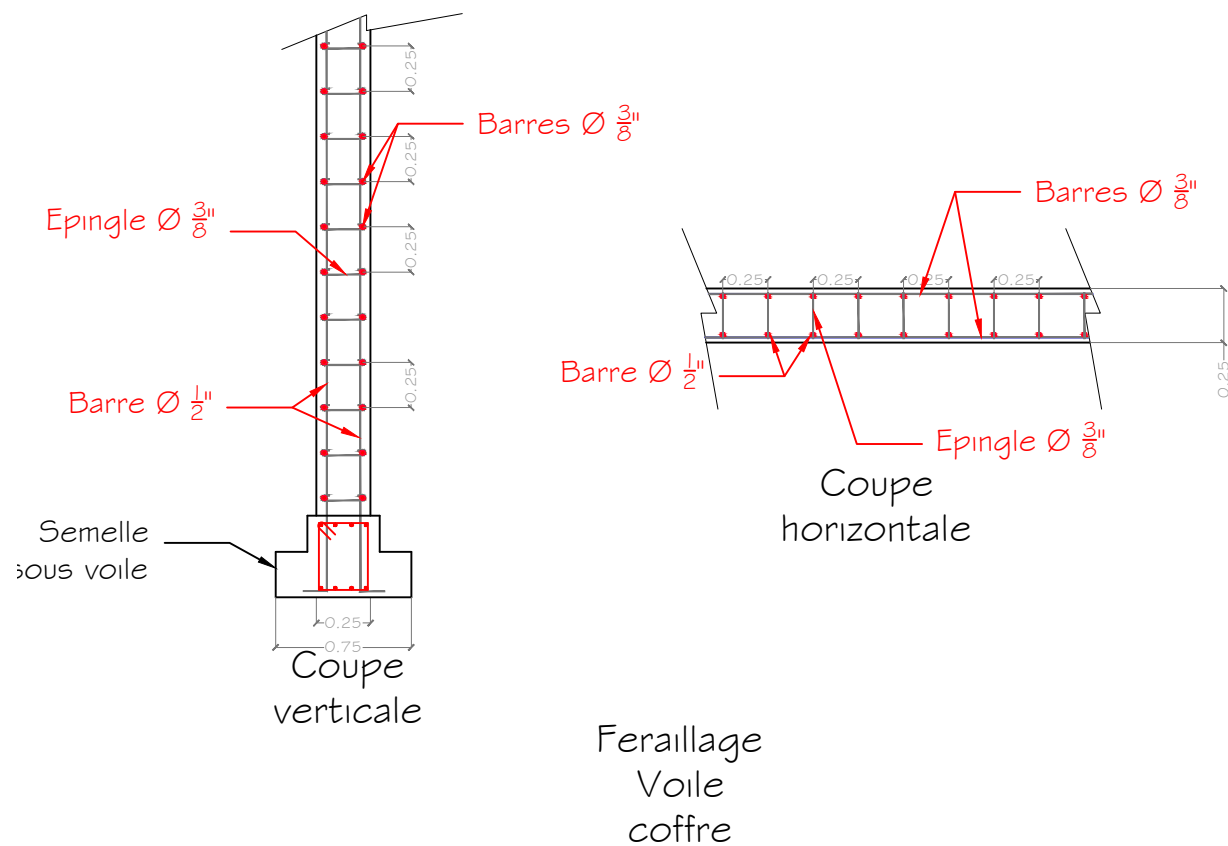
**TITRE:**  
PL-S-02



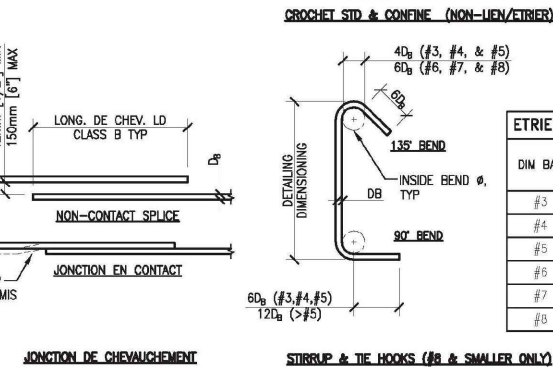
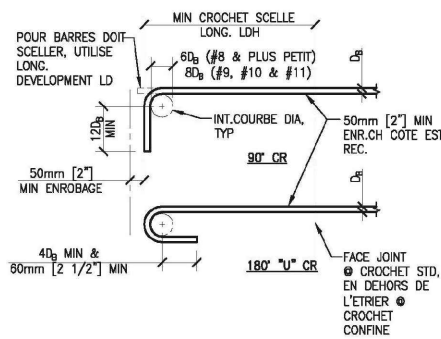
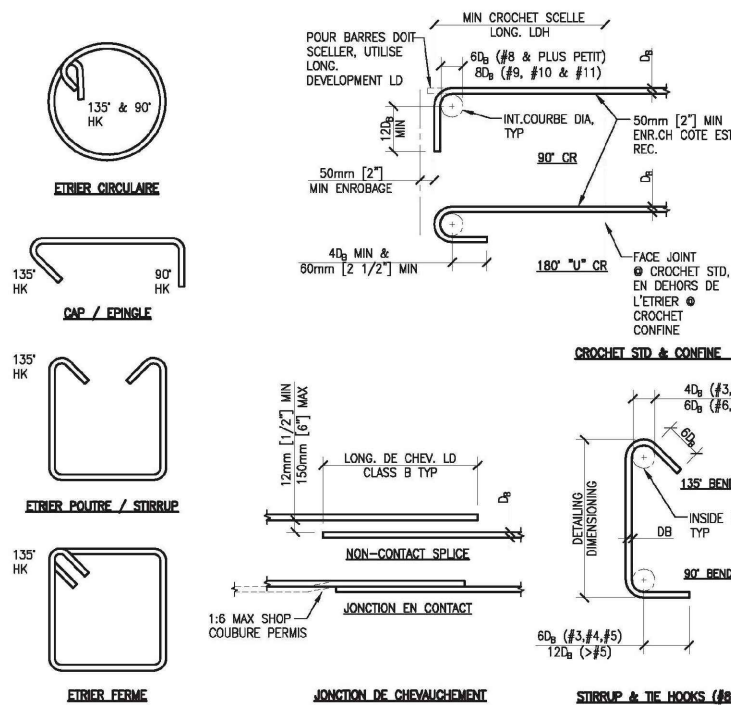




DETAILS MURS DE REFEND



DETAILS RENFORCEMENT OUVERTURES



CROCHET STANDARD	
DIM BARRES	DIAMETRE D FINI DE COUBURE mm [POUCES]
#3	57 [2 1/4]
#4	75 [3]
#5	95 [3 3/4]
#6	115 [4 1/2]
#7	133 [5 1/4]
#8	150 [6]

CROCHETS, CHEV. & LONG. DE DEVELOPPEMENT					
DIM. BAR	CRO STD L <sub>ch</sub> mm [IN]	CRO CONFINE L <sub>ch</sub> mm [IN]	CLASS B JONCT. CHEV. L <sub>d</sub> mm [IN]		LONG. DEVELOPPEMENT L <sub>d</sub> mm [IN]
			BOIT	TOP	
#3	150 [6]	150 [6]	560 [22]	710 [28]	430 [17]
#4	200 [8]	150 [6]	740 [29]	940 [37]	560 [22]
#5	250 [10]	200 [8]	910 [36]	1190 [47]	710 [28]
#6	300 [12]	250 [10]	1090 [43]	1420 [56]	840 [33]
#7	300 [12]	280 [11]	1600 [63]	2060 [81]	1220 [48]
#8	410 [16]	330 [13]	1880 [72]	2360 [93]	1400 [55]

ETRIER/LIE CROCHETS	
DIM BAR	DIAMETRE FINI DE COUBURE D mm [IN]
#3	38 [1 1/2]
#4	50 [2]
#5	65 [2 1/2]
#6	115 [4 1/2]
#7	133 [5 1/4]
#8	150 [6]

- NOTES:
1. L<sub>ch</sub> - LONG. DE DEVELOPPEMENT DE CROCHET.
  2. L<sub>d</sub> - LONGUEUR DE DEVELOPPEMENT.
  3. VOIR LE CODE DU BATIMENT ET LA DERNIERE VERSION D'ACI POUR TOUTES LES EXIGENCES NON NOTES.
  4. POUR BETON LEGER MULTIPLIER L<sub>ch</sub> AND L<sub>d</sub> PAR LES VALEURS INDIQUEES DANS 1.3.
  5. LES BARRES HORIZONTALES AU SOMMET AVEC PLUS DE 300MM(12") DE BETON FRAIS COULES SOUS LES BARRES. TOUTES LES AUTRES BARRES SONT DES BARRES EN BAS.
  6. CROCHET STANDARD L<sub>ch</sub> NE FAIT PAS PARTIS DES ETRIES. CROCHET CONFINE L<sub>ch</sub> PEUT ETRE UTILISE QUAND L'ACI 318-05 12.5.3b-c S'APPLIQUE.
  7. LES VALEURS INDIQUEES CI-DESSUS SONT DES GRADES 60. (FY=60 KSI) POUR LES ARMATURES.
  8. LONG. DE CHEV. ILLUSTRES SONT POUR LES ESPACES CLAIRS MOINS QUE 230. ENROBAGE DE BETON PAS MOINS QUE LE D<sub>ch</sub>.
  9. POUR ARMATURES RECOURVET EN PARTIE AVEC EPOXY, VOIR CODE DU BATIMENT.

DIMENSIONS DES BARRES D'ARMATURES		
DIM. BAR	DIAMETRE (mm)	DIAMETRE (PO)
#3	9.5	[3/8]
#4	12.7	[1/2]
#5	15.9	[5/8]
#6	19.0	[3/4]
#7	22.2	[7/8]
#8	25.4	[1]

## DETAILS D'ARMATURES & LONGUEUR DE DEVELOPPEMENT

### STRUCTURAL CONCRETE NOTES

- 1- STRUCTURAL DESIGN IS BASED ON AN CONCRETE 28-DAY COMPRESSIVE STRENGTH OF 3000 PSI.
- 2- CEMENT SHALL BE TYPE I OR II PORTLAND CEMENT. SAND SHALL BE CLEAN, WASHED RIVER SAND, AGGREGATE SHALL BE CLEAN, CRUSHED RIVER ROCK WITH A MAXIMUM SIZE OF 25mm (1") FOR STRUCTURAL ELEMENTS (SLABS, COLUMNS, BEAMS), 40mm (1 1/2 ") FOR FOUNDATIONS.
- 3- CONCRETE SHALL BE MIXED IN A STEEL, HOPPER, OR ON A CLEAN SURFACE. THE CONTRACTOR SHALL TAKE APPROPRIATE MEASURES SO AS TO NOT ALLOW SOIL OR DEBRIS TO ENTER THE MIXTURE.
- 4- CONSTRUCTION JOINTS SHALL BE CLEANED AND ROUGHENED BY REMOVING THE ENTIRE SURFACE TO EXPOSE CLEAN AGGREGATE SOUDLY EMBEDDED IN THE MORTAR MATRIX, SLUSH WITH A COAT OF NEAT CEMENT BEFORE PLACING CONCRETE. SEE PLANS AND DETAILS FOR LOCATION AND TYPE OF CONSTRUCTION JOINT. LOCATIONS OF ADDITIONNAL CONSTRUCTION JOINTS NOT SHOWN ON THESE PLANS SHALL BE SUBMITTED FOR APPROVAL BY THE EOR PRIOR TO PLACING ANY CONCRETE.
- 5- PRIOR TO LOADING THE STRUCTURE, FOUNDATION CONCRETE MUST BE ALLOWED TO CURE FOR A MINIMUM OF 3 DAYS, BEAM AND COLUMN CONCRETE MUST BE ALLOWED TO CURE FOR A MINIMUM OF 7 DAYS.
- 6- SEE ARCHITECTURAL DRAWINGS FOR WALL OPENINGS, WALL OFFSETS, CHAMFERS, KERFS, DRIPS AND FOR EXTENT OF DEPRESSION, RAMPS, ETC. PROVIDE SLEEVES FOR ALL PIPES THROUGH CONCRETE WALLS AND FOOTINGS WERE SHOWN ON THESE DRAWINGS. CORING IS NOT PERMITTED WITHOUT PRIOR APPROVAL BY THE EOR.
- 7- LEAN CONCRETE USED FOR SOIL, INFILL SHALL BE PROPORTIONED USING HALF THE CEMENT AS REQUIRED FOR THE STRUCTURAL MIX.

Table 1 - Rebar Sizes & Weights

Designation		Diameter (inches)	Weight (lbs/ft)
Industry Size	Metric Size		
3	10	3/8	0.376
4	13	1/2	0.668
5	16	5/8	1.043
6	19	3/4	1.502
7	22	7/8	2.044
8	25	1	2.670
9	29	1 1/8	3.400



**PROGRAMME :**  
CANAAAN UPGRADING AND  
COMMUNITY DEVELOPEMENT  
(CUCD)

TRAVAUX D'AMENAGEMENT  
DU CENTRE DE SERVICES AUX CITOYENS/MFI BANK

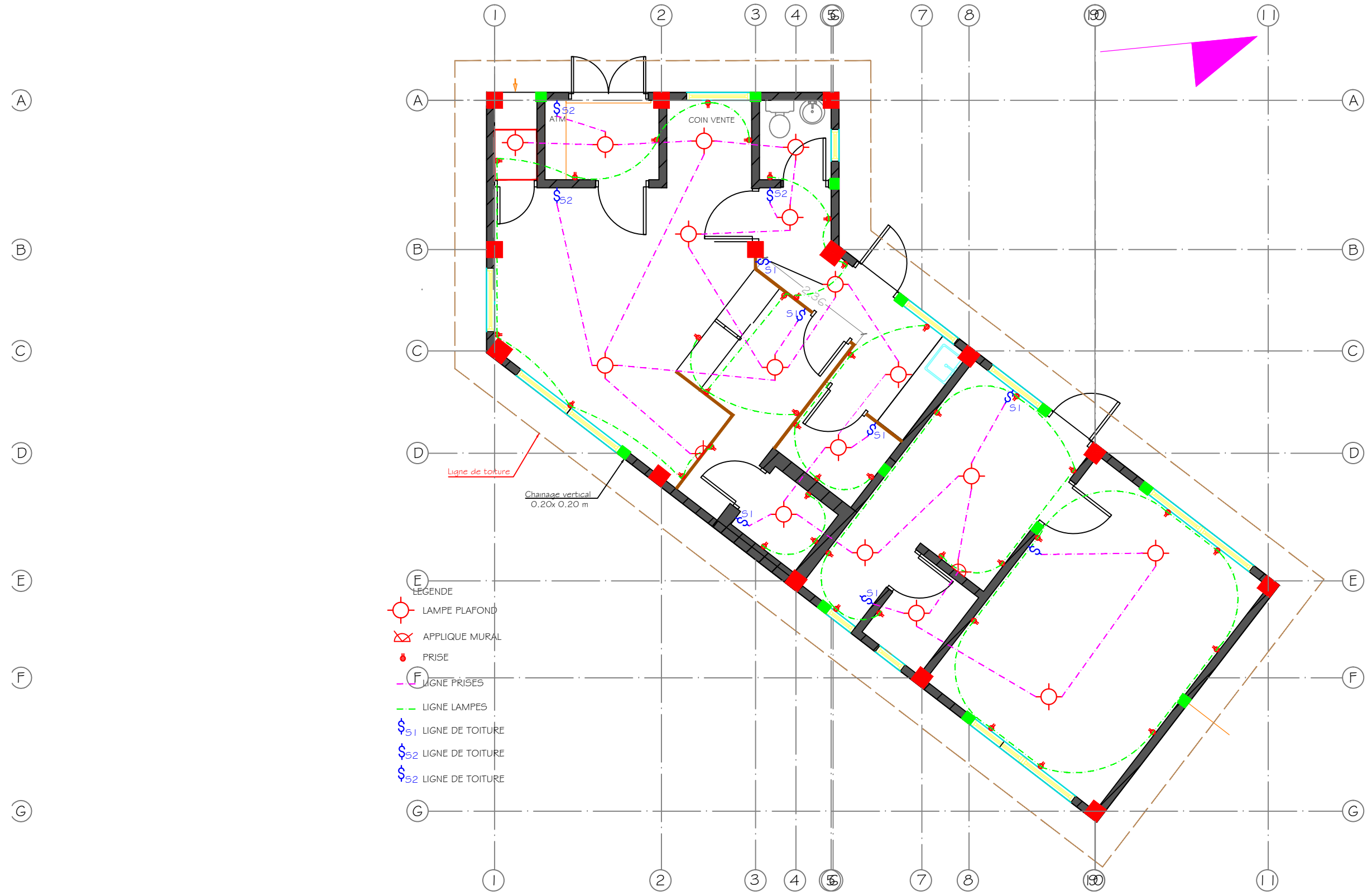
**ETUDES TECHNIQUES**

**PREPARE PAR:**  
FRITZ AUPLAN, Ing Consultant

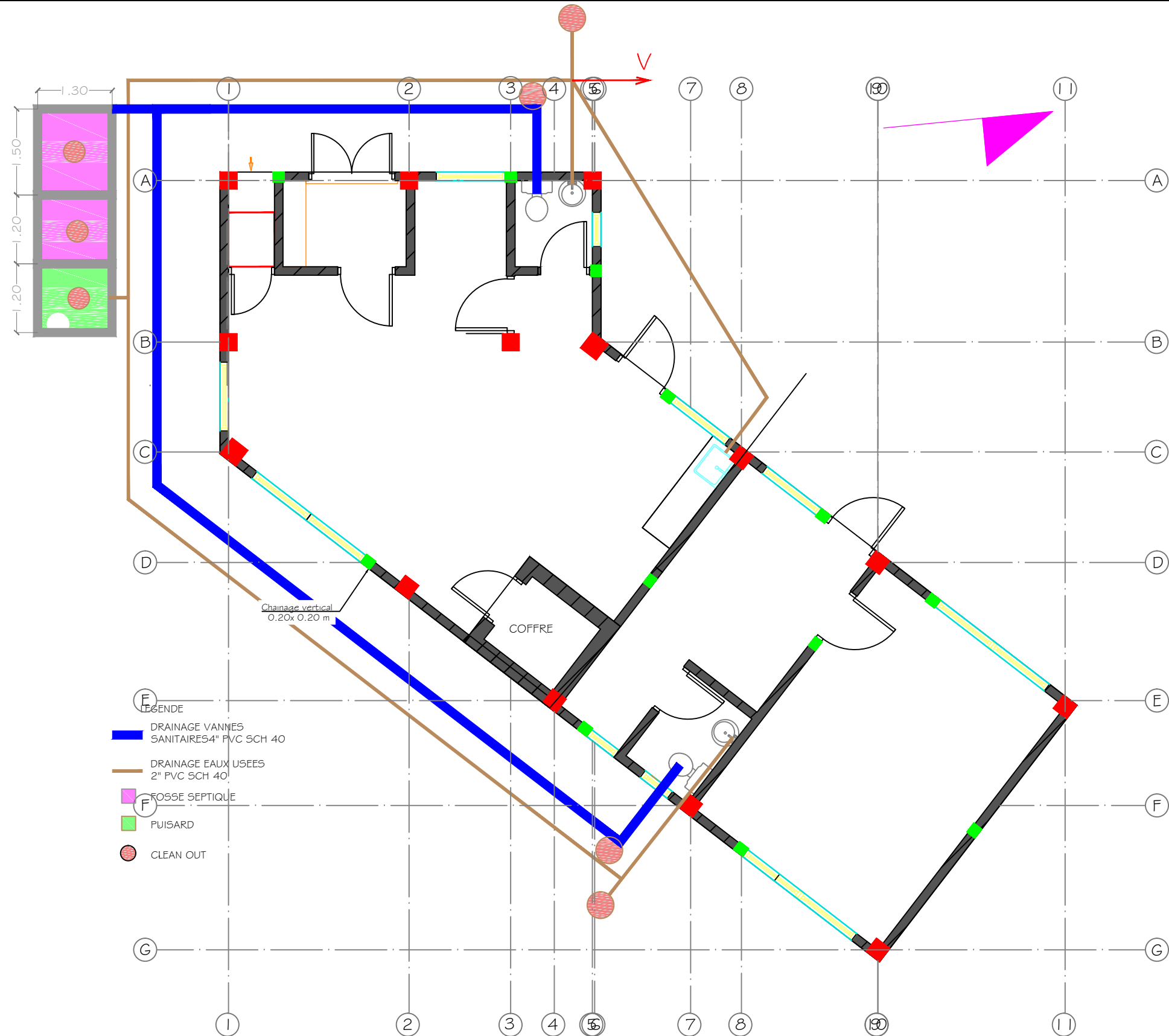
### STRUCTURAL CONCRETE NOTES

<b>ECHELLE:</b> AUCUNE	<b>DATE:</b> DECEMBRE 2016	<b>TITRE:</b> PL-S-06
---------------------------	-------------------------------	--------------------------





- LEGENDE
- LAMPE PLAFOND
  - APPLIQUE MURAL
  - PRISE
  - LIGNE PRISES
  - LIGNE LAMPES
  - LIGNE DE TOITURE
  - LIGNE DE TOITURE
  - LIGNE DE TOITURE



**PROGRAMME :**  
CANAAN UPGRADING AND  
COMMUNITY DEVELOPEMENT  
(CUCD)

TRAVAUX D'AMENAGEMENT  
DU CENTRE DE SERVICES AUX CITOYENS/MFI BANK

**ETUDES TECHNIQUES**

**PREPARE PAR:**  
FRITZ AUPLAN, Ing Consultant

**PLAN DE PLOMBERIE**

**ECHELLE:**  
1/75

**DATE:**  
DECEMBRE 2016

**TITRE:**  
PL-B-01